

Conti Hybrid

Driving regional transport into the future.



GENERATION 3. DRIVEN BY YOUR NEEDS.

Conti Hybrid HS3 / HD3 / HT3 (19.5")

The ever-increasing demands of today's transport market require a new level of versatility for commercial vehicles. The new Conti Hybrid is the perfect tire solution. With the highest mileage performance and excellent fuel efficiency, it is equally at home on city streets, motorways and uneven roads. Through its new technical features that help you achieve your lowest overall driving costs, the comprehensive, cutting-edge tire line Conti Hybrid is redefining regional, mile after mile after mile.

The new Conti Hybrid is ideal for mixed applications in regional distribution up to 16 t, e.g.



and many more ...

ContiLifeCycle inbuilt

Continental's premium casing, with Air-Keep inner liner, triangular belt and bead with steel cord chafer, guarantees high retreadability. The new regrooving indicators make regrooving faster and easier. The Hybrid tire line is perfectly tailored to our ContiLifeCycle.

GENERATION 3. DRIVEN BY YOUR NEEDS.

Technical data and air pressure recommendations

Tire size	Operating code				EU tire label				Rim		Tire dimensions						Load capacity (kg) per axle at tire pressure ⁶⁾ (bar) (psi)						
	Pattern	LI/SI ¹⁾	PR	M+S	Speed index and reference speed (km/h)	T/TL ²⁾	B ³⁾	C ⁴⁾	E ⁵⁾	Rim-width	Min. distance between rim centers	Max. standard value in service		Design value		Stat. radius	Rolling circumference	Tire fit-ment	Load capacity (kg) per axle at tire pressure ⁶⁾ (bar) (psi)				
												Width	Outer-Ø	Width +1%	Outer-Ø ±1%				±1.5%	±2%	LI ¹⁾	7.5 (109)	8.0 (116)
445/45 R 19.5 Conti Hybrid HT3	160/- J	22	M+S	J 100	TL	B	C	⊕ 72	14.00 15.00		453 464	911	436 446	895	416	2712	160	S	7775	8190	8595	9000	
435/50 R 19.5 Conti Hybrid HT3	160/- J	20	M+S	J 100	TL	B	C	⊕ 72	14.00 15.00		456 466	949	438 448	931	431	2821	160	S	7775	8190	8595	9000	
245/70 R 19.5	Conti Hybrid HS3	136/134 M	16	M+S	M 130	TL	C	B	⊕ 69	6.75 7.50	270 279	250 258	853	240 248	839	389	2559	141 136 140 134	S S D D	4655 4050 9045 7670	4905 4265 9525 8075	5150 4480 10000 8480	
	Conti Hybrid HD3	136/134 M	16	M+S	M 130	TL	D	C	⊕ 74														
	Conti Hybrid HT3	141/140 K	18		K 110	TL	C	B	⊕ 73														
265/70 R 19.5	Conti Hybrid HS3	140/138 M	16	M+S	M 130	TL	C	B	⊕ 69	6.75 7.50 8.25	286 295 303	264 272 280	881	254 262 269	867	401	2644	143 140 141 138	S S D D	4930 4745 9315 8960	5190 5000 9810 9440	5450 10300	
	Conti Hybrid HD3	140/138 M	16	M+S	M 130	TL	D	C	⊕ 74														
	ContiRe Hybrid HD3	140/138 M	16	M+S	M 130	TL	-	-	-														
	Conti Hybrid HT3	143/141 K	16		K 110	TL	C	B	⊕ 73														
285/70 R 19.5	Conti Hybrid HS3	146/144 M	16	M+S	M 130	TL	C	B	⊕ 69	7.50 8.25 9.00	311 318 327	287 294 303	911	276 283 291	895	413	2730	150 146 148 144	S S D D	5790 5185 10885 9675	6095 5460 11465 10190	6400 5730 12035 10695	6700 6000 12600 11200
	ContiRe Hybrid HD3	146/144 M	16	M+S	M 130	TL	-	-	-														
	Conti Hybrid HD3	146/144 M	16	M+S	M 130	TL	C	C	⊕ 74														
	Conti Hybrid HT3	150/148 K	18		K 110	TL	C	B	⊕ 73														
305/70 R 19.5	Conti Hybrid HS3	148/145 M	18	M+S	M 130	TL	C	B	⊕ 69	8.25 9.00	334 343	309 317	941	297 305	923	424	2815	148 145	S D	5695 10490	6000 11050	6300 11600	
	Conti Hybrid HD3	148/145 M	18	M+S	M 130	TL	C	C	⊕ 76														

Data acc. to DIN 7805/4, WdK-Guidelines 134/2, 142/2, 143/14, 143/25
 1) Load index single/dual wheel fitment and speed symbol
 2) TT = Tube Type, TL = Tubeless
 3) Fuel efficiency
 4) Wet grip
 5) External rolling noise (db)
 6) For tire pressures of 8.0 bar (116 psi) or greater, use valve slit cover plate

6F28C.en 2015.09

Continental Reifen Deutschland GmbH
 Büttnerstraße 25
 30165 Hannover
 Germany

www.continental-truck-tires.com
 www.continental-corporation.com



Redefining regional: Conti Hybrid 19.5

Excellent
 mileage
 fuel consumption

Conti Hybrid HS3 / HD3 / HT3

- › Excellent mileage performance and fuel efficiency
- › Ideal for mixed applications: regional traffic, motorways and urban roads



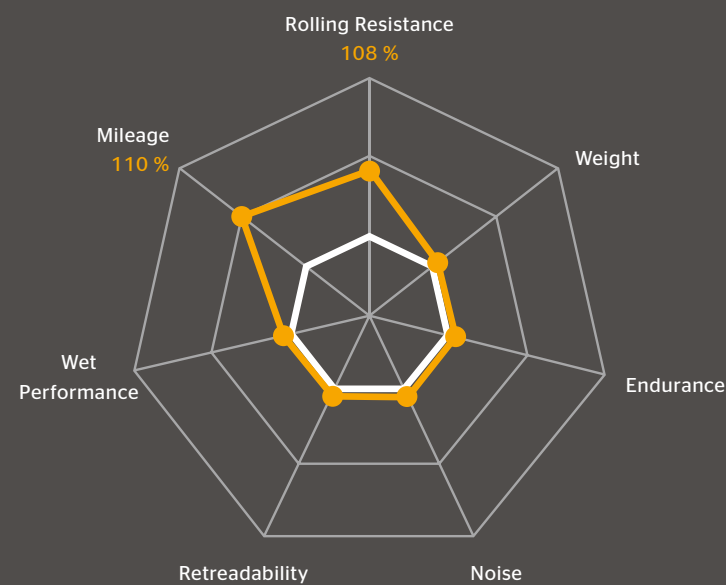
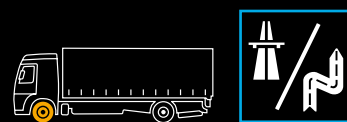
Conti Hybrid HS3

Conti Hybrid HD3

Conti Hybrid HT3

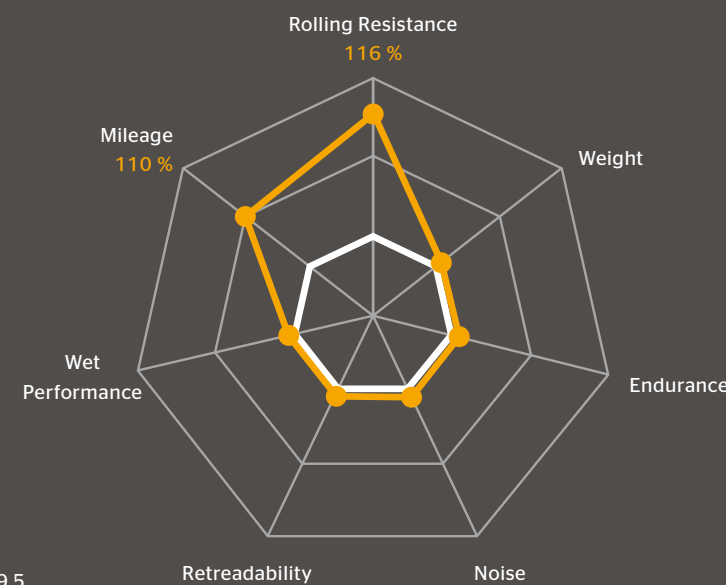
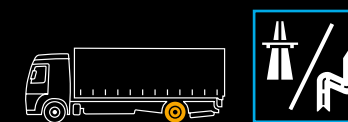


Conti Hybrid HS3



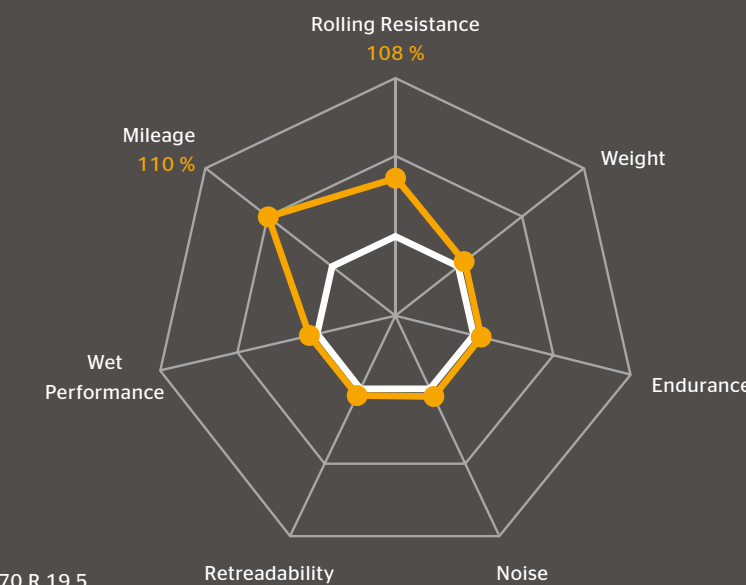
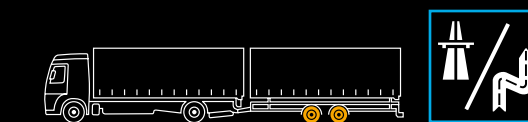
— Conti Hybrid HS3 — Compared to predecessor 265/70 R 19.5

Conti Hybrid HD3



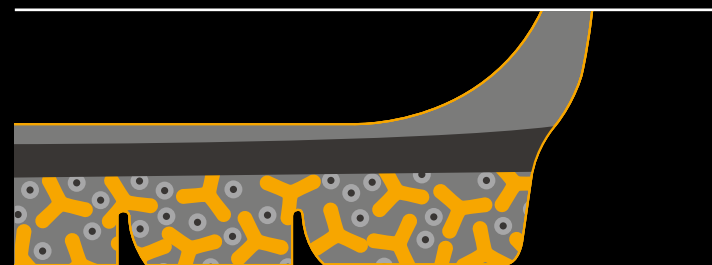
— Conti Hybrid HD3 — Compared to predecessor 265/70 R 19.5

Conti Hybrid HT3



— Conti Hybrid HT3 — Compared to predecessor 265/70 R 19.5

Product highlights

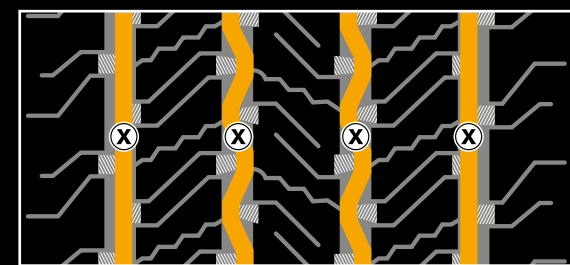


› **The two-layer tread construction:** combines high mileage performance in the cap compound with significant rolling resistance improvements in the base compound

› **Plus Volume Pattern:** narrowed groove widths result in increased pattern volume which improves wear resistance to guarantee high mileage performance

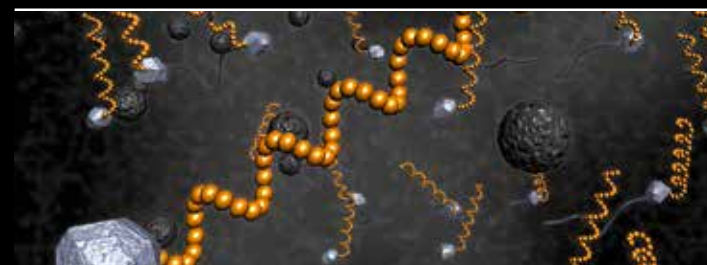
› **Wet performance pocket sipes:** a new siping technology with full-depth sipes enhances water displacement and improves wet performance over lifetime

Regrooving recommendations



Size	Depth (mm)	Width (mm)
245/70 R 19.5	3.0	8
265/70 R 19.5	3.0	8
285/70 R 19.5	3.0	8
305/70 R 19.5	3.0	8

Product highlights

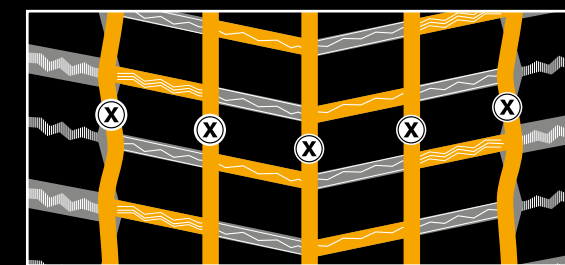


› **Hybrid Compound:** the advanced application-optimized tread compound adds up to significant improvements in rolling resistance and mileage

› **Two-layer tread construction:** combines high mileage performance in the cap compound with significant rolling resistance improvements in the base compound

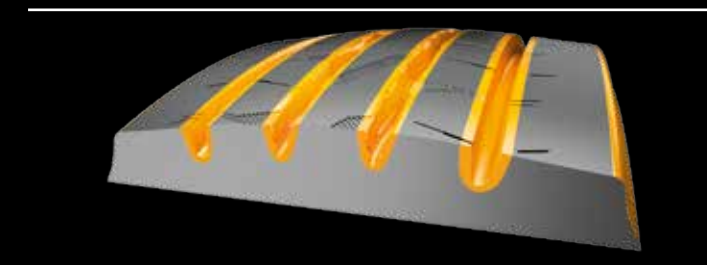
› **Chamfered Edge:** the Chamfered Edge reduces deformation amplitude in sidewall and bead area which results in improved rolling resistance and helps lower fuel consumption

Regrooving recommendations



Size	Depth (mm)	Width (mm)
245/70 R 19.5	3.0	5
265/70 R 19.5	3.0	5
285/70 R 19.5	3.0	5
305/70 R 19.5	3.0	5

Product highlights

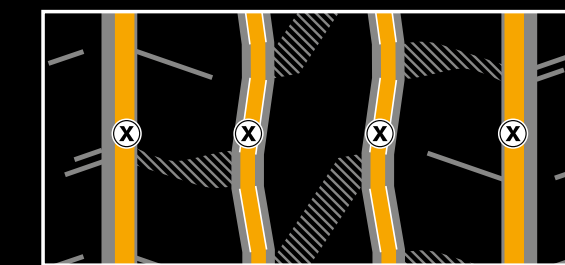


› **Plus Volume Pattern:** narrowed groove widths result in increased pattern volume which improves wear resistance to guarantee high mileage performance

› **Hybrid Compound:** the advanced application-optimized tread compound adds up to significant improvements in rolling resistance and mileage

› **Rolling resistance sidewall compound:** the polymers selected for the new rolling resistance compound provide more flexibility between the polymer chains. This results in reduced friction and therefore lower rolling resistance

Regrooving recommendations



Size	Depth (mm)	Width (mm)
245/70 R 19.5	3.0	A: 9 B: 7
265/70 R 19.5	3.0	A: 9 B: 7
285/70 R 19.5	3.0	A: 9 B: 7

All Hybrid drive axle tires are provided with the Three Peak Mountain Snow Flake (3PM SF)¹⁾ symbol and M+S marking.

¹⁾ Three Peak Mountain Snow Flake
 *Snow tire means a tire [...] designed to achieve in snow conditions a performance better than a normal tire [...] Source: Economic Commission for Europe of the United Nations (UN/ECE), R117